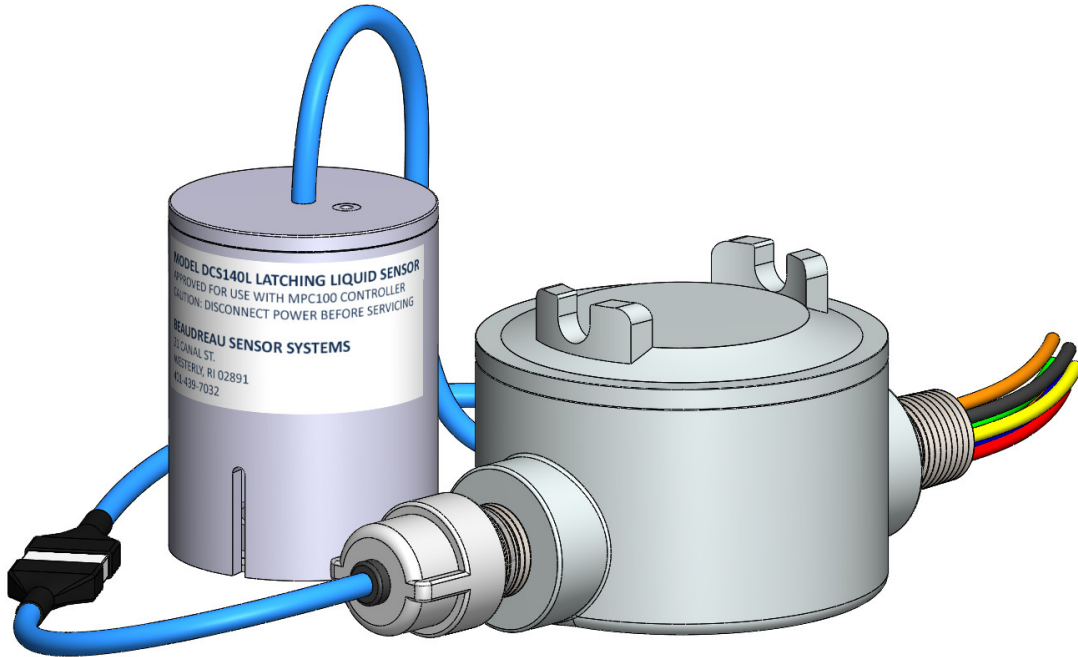


# LD140 Stand-Alone Containment Sump Liquid Sensor-Controller Kit



- **Low Cost**—No costly new conduit or monitoring system required
- **Easy to Install**—Controller installs directly into junction box
- **Stand-alone**—Shuts off dispenser power when liquid is detected
- **Flexible**—Use in dispenser or turbine sumps, latching (LD140L) and non-latching (LD140NL) versions available

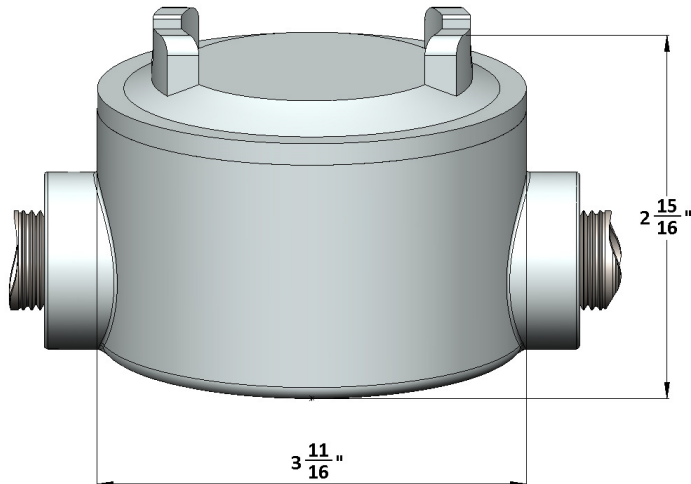
**BEAUDREAU** Sensor Systems

# LD140 Stand-Alone Containment Sump Liquid Sensor-Controller Kit

DCS140L/NL Liquid Sensor



MPC100XP Controller



## Specifications:

Detection Time: <1 second

Lower Detection Limit: <1.2 inches

Input Voltage: 120 - 240 volts AC, 60 Hz

## Listings:

DCS140 Sensors with MPC100 Controller (approved for gasoline, diesel, E85, biodiesel up to B20, B100, alcohol mixtures up to 100%): National Work Group on Leak Detection Evaluations (NWGLDE), California State Water Board LG 113, Wisconsin COMM 10 Material Approval #20110003

MPC100 Controller: ETL listed, conforms to UL Standard 913 (7th Edition) for Class I, Division 1, Group D Hazardous Locations

Beaudreau Sensor Systems, LLC  
Visit us online at [www.beaudreausensorsystems.com](http://www.beaudreausensorsystems.com)  
Email: [sales@beaudreausensorsystems.com](mailto:sales@beaudreausensorsystems.com)

# BEAUDREAU

Sensor Systems